

61st Annual

# TUSCARAWAS VALLEY

## PIONEER POWER ASSOCIATION, INC.

**August 15, 16 & 17, 2025**  
**Friday, Saturday, Sunday**



**Featuring The Oliver Family of Equipment**



[tvppasteamshow.org](http://tvppasteamshow.org)

**Tuscarawas County Fairgrounds**  
**Dover, Ohio**



TVPPA facebook

---

**WE WOULD LIKE TO THANK THE FOLLOWING  
FOR HELPING TO MAKE OUR SHOW SPECIAL THIS YEAR**

**GOLD**

**BUD' FARM TOYS**  
(RAFFLE TOY)  
**D. WEAVER TRUCKING LLC**  
(HAULING DRIVEWAY MATERIAL FOR SHOW GROUNDS)  
**DE EARTHWORKS LLC**  
(DRAINAGE & EXCAVATING FOR DRIVEWAY)  
**KIKO'S GREENHOUSE**  
(BLEACHERS FOR SHOW GROUNDS)  
**MILLERSBURG TIRE SERVICE, INC**  
(RAFFLE TOY)

**NRH ELECTRIC, INC.**  
**OWENS IMPLEMENT, INC.**  
**SOEHNLEN BROS. SAND & GRAVEL, INC**  
(DRIVEWAY MATERIAL FOR SHOW GROUNDS)  
**T BONE SALES & SERVICE**  
(TRAILER FOR HAULING DRIVEWAY MATERIAL)  
**WALT & EMILY WELDON**  
**ZIMMERMAN STEEL**

**SILVER**

**DOVER PHILA FEDERAL CREDIT UNION**  
(PLAQUES)  
**FISHER FARM SERVICE**  
**MARLBORO SUPPL**  
**DISCOUNT ON DRAINAGE MATERIAL**  
**NFM WELDING ENGINEERS, INC.**  
**BEN & BETHANY PAULI**  
(KIDDIE PEDDLE TRACOTR PULL)  
**TMK BARKERSVILLE/TMK VALLEY PROPANE**

**BRONZE**

**CEI CRANE & RIGGING**  
**J. A. PAULI CATTLE**  
**JEREMY & GALENA DAVIS**  
(GAS FOR THE SHOW)  
**LAUTZENHEISER FAMILY**

**PAUL'S SERVICE**  
**PAULI WELDING SERVICE**  
**SHOUP BROTHERS FARM**  
**STARRETT SERVICE, INC.**

**A SPECIAL THANKS TO THE FOLLOWING**

Doug Swiehart, Olin Gordon, Clinton Steel, Fred Jeanneret and the group that set up the sawmill.  
Gary Stark for the sled used for the garden tractor pull. Everyone that brings in logs for the mill.  
And all our members that bring all the exhibits to our show.

**To all the board members that do so  
much behind the scenes items,  
We wouldn't have a show without you!**

---

---

# Welcome

to our 61st Annual Show

The TVPPA was founded in 1963 by a group of steam enthusiasts from the Tuscarawas Valley. Our first "Show" was held August 8 & 9, 1964 at the Tuscarawas County Fairgrounds. The show expanded to a three-day show in 1966. Over the years many things have changed, yet our purpose as an organization has not. "For the preservation and perpetuation of antique power equipment and to further the public appreciation of Antique Americana." Hence our slogan:

"Preserving the Past, Educating the Future"

We hope you enjoy the various displays at our show this year, and we want to thank you for supporting us over the past 61 years. We also want to say thank you to our current and past Officers, Board Members, Thesherman, Queens, and Active Members, all who have done so much through the years to keep this show alive for all of us to enjoy. Congratulations to everyone involved —  
61 years is something to be proud of.

The Tuscarawas Valley  
Pioneer Power Assoc.  
PO Box 22 • Brewster, Ohio 44613

Membership \$12.00

Exhibitors welcome, but you must be a member to exhibit.  
Exhibitor camping is available, \$30 per camper, \$10 per tent  
collected by the TVPPA.

Outside Camping and Hotel lists are available upon request.

All Steam equipment is State and  
TVPPA Safety Committee Approved.

NO ALCOHOLIC BEVERAGES PERMITTED  
NO BICYCLES • NO FIREARMS  
NO DOGS IN BUILDINGS OR FOOD AREAS



## **2024 Thresherman of the Year**

### **Brandon Speicher**

Brandon Speicher has been attending the TVPPA Show for many years, where he's built lasting friendships and countless memories. He was introduced to the hobby by his good friend Ben Pauli, but it truly took hold after he bought his first tractor—a 1945 Allis Chalmers C—from a neighbor.

Brandon enjoys fixing and working on things, a passion that fits perfectly with the antique tractor hobby. He has a growing collection of garden tractors that he enjoys tinkering on in his garage. He works in the graphic design and printing industry at Carbonless On Demand, a print shop located in Massillon, Ohio. Recently, Brandon added a Ferguson TO-20 to his collection after his son Flint, inspired by the show Fergie the Little Grey Tractor, decided a toy just wasn't enough—they needed a real one!

Brandon lives in Navarre, Ohio, with his wife Tiffany and their two sons, Flint (5) and Miles (3). When he's not in the garage, he enjoys spending time with his family. He looks forward to many more years of memories and sharing the love of tractors with the next generation.

---

---

## *Charter Members*

W. C. DUNLAP	JACOB LIMBACHER
JACK McCARTAN	CLARENCE HARMON
WALTER LUKE	O. C. WALLACE
CHARLES HARRISON	RENO MENAPACE
HARRY MOOMAW	HOWARD MIZER
J. D. HINTON	I. E. FARVER
FRANK STANSBURY	GEORGE VOORHES
C. K. HUMPHREYVILLE	RUSSELL BRAND
MELVIN LUDY	ROBERT RINEHART
RAYMOND LAIZURE	HARRY HARRIS
VERLE BAKER	JULIUS BAKER
KENNETH HINES	TOM WALKER
RALPH VAN FOSSEN	HENRY JEANNERETTE
ALLAN BAKER	MR. MAUSS
NORMAN SENHAUSER	FRANCIS YOUNG
KARL NEWTON	CLARENCE STANSBURY
TRACEY NEWTON	RAY STANSBURY
WALTER MOOMAW	LOIS BROWN
ROBERT NEWTON	F. A. CARRUTHERS
FRANK SHUTT	FOREST TAYLOR
ROBERT SENHAUSER	DONALD DAVIS
W. L. BEECHY	JAMES PORTER
W. L. BYERS	DEAN KAIL
VERNON KAIL	SHORTY MILLER

*Thank You to our Charter Members and  
their vision of preserving our past.*

---

**Thank you for hauling our  
driveway material at our  
show grounds.**



**D. Weaver Trucking, LLC**

9228 Strasburg Bolivar Rd. NW  
Strasburg, Ohio 44680

**330-988-2829**

dweavertrucking1180@gmail.com







## **Millersburg Tire Service Inc.**

**7375 State Route 39 East**

**Millersburg, OH 44654**

**Phone: (330) 674-1085**

**Fax: (330) 674-6598**

**Email: [sales@millersburgtireservice.com](mailto:sales@millersburgtireservice.com)**

**[www.millersburgtireservice.com](http://www.millersburgtireservice.com)**

***COMPLETE TIRE SERVICE SINCE 1953***

***We sincerely appreciate your business!***

**Thank you for  
your help with our  
drainage supplies for  
our show grounds.**



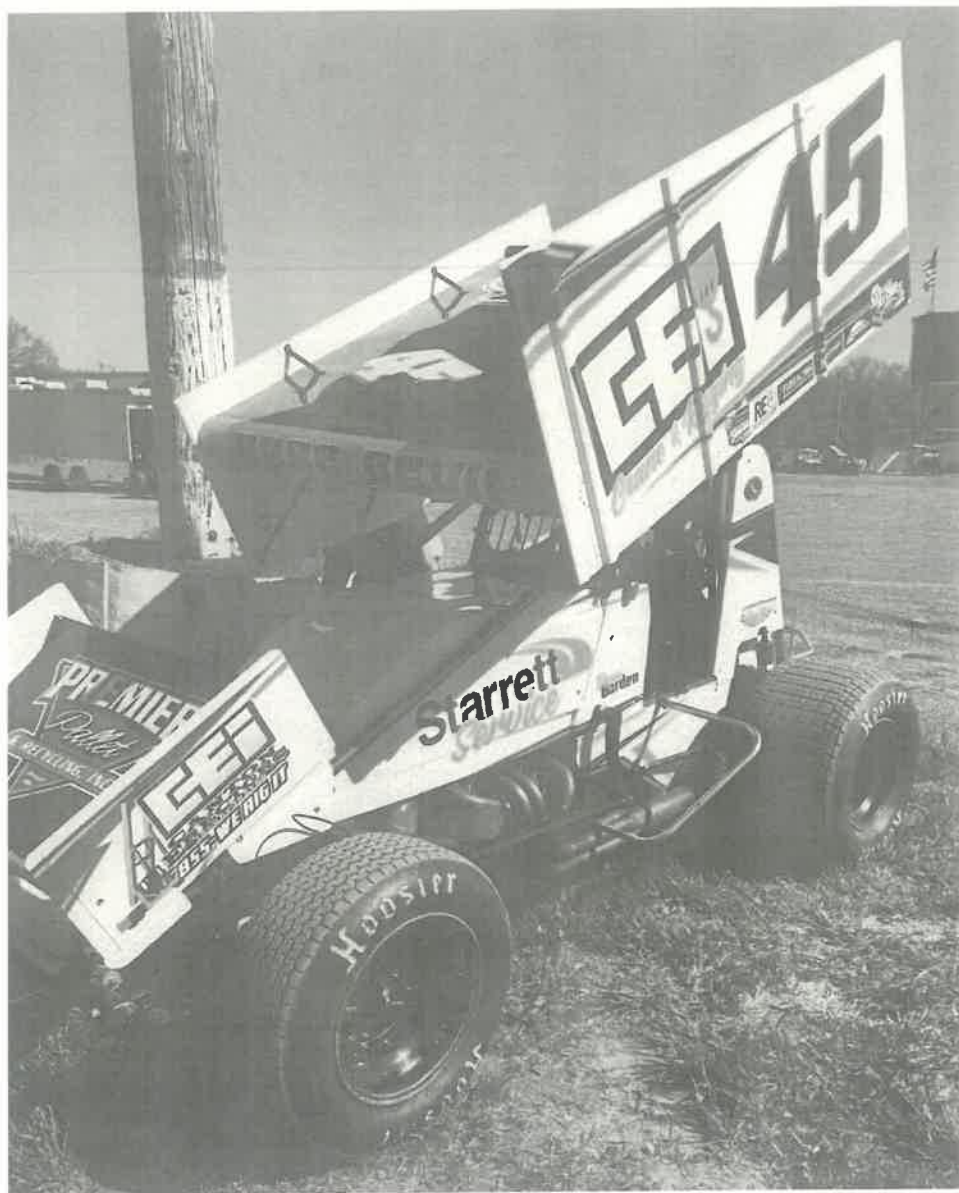
**Marci & Scott  
Schwinn**

*"Smile - God Loves You"*

9271 Edison St.  
Louisville, OH 44641  
marci@marlboro-supply.com  
scott@marlboro-supply.com

P: 330-935-0179  
F: 330-935-2555  
marlboro-supply.com



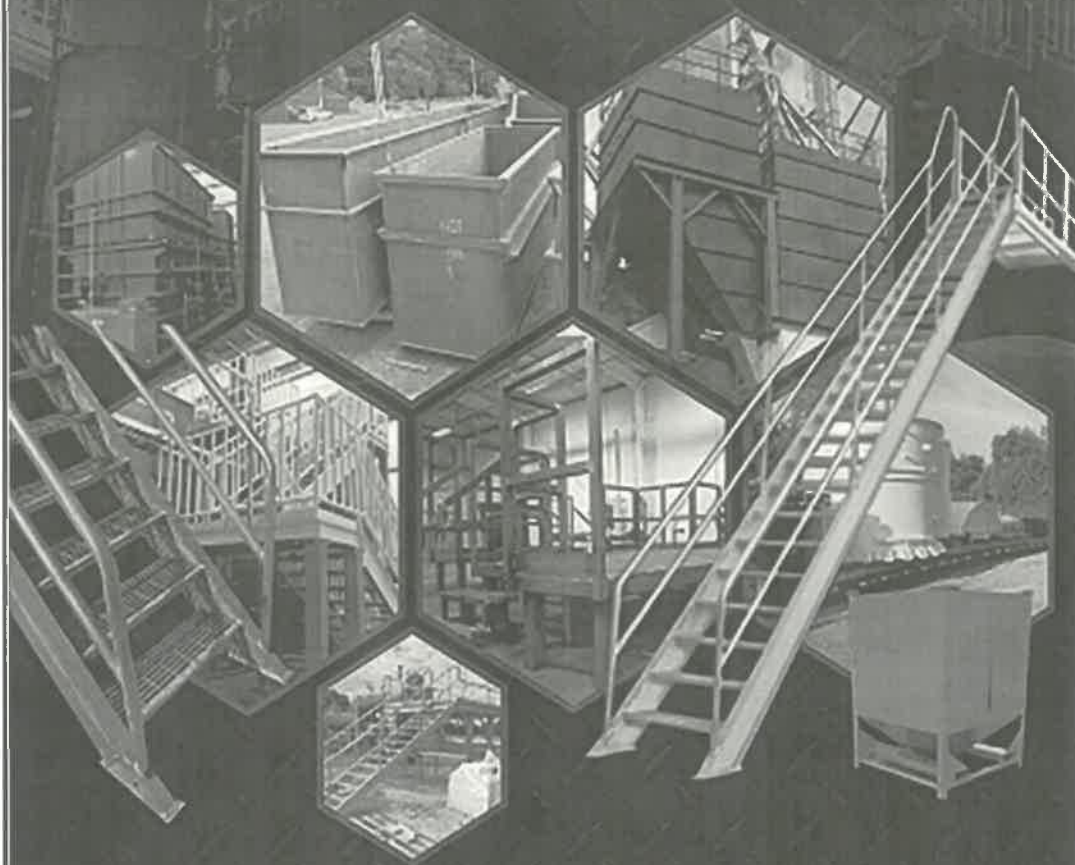


**GROVE**  
Racing

# ZIMMERMAN STEEL

## & Supply Co. LLC

TANKS • LADDERS • STAIRS • PLATFORMS



STRATEGIC PARTNERS FOR FABRICATION SOLUTIONS  
[zimmermansteel.com](http://zimmermansteel.com) | [info@zimmermansteel.com](mailto:info@zimmermansteel.com)  
18543 DAVIS RD, DALTON, OH 44618

330-828-1010 | 800-323-1899

# Starrett SERVICE

MASSILLON • OH

**330-832-5995**



## HEAVY EQUIPMENT MOVING

**Thank you for your help  
with the drainage and  
driveway at our show  
grounds.**





Would you like to advertise here next year?  
Check out our website for more information  
and forms.

[www.tvppasteamshows.org](http://www.tvppasteamshows.org)  
or email

[doversteamshow@yahoo.com](mailto:doversteamshow@yahoo.com)  
or call 330-844-5415

# **WJER RADIO**

**AM 1450 100.9 FM**

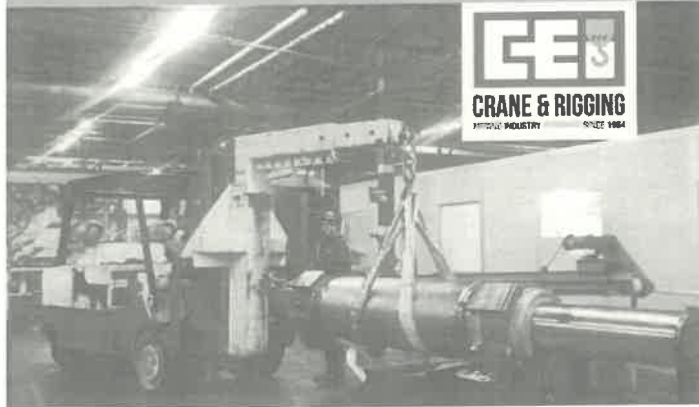


*All of the programming you love  
on AM...now available on FM!*

## **100.9 FM**



**NEED EQUIPMENT  
STORAGE SPACE?**



**CRANE & RIGGING**

MOVING INDUSTRY FORWARD SINCE 1964

**330-453-7363**

**THE RIGHT TEAM.  
THE RIGHT EQUIPMENT.**



**CRANE & RIGGING**



# Fisher Farm Service

SERVING OUR AREA SINCE 1975.



**330-364-4449**



**PARTS • SERVICE • HAULING**

**ALL MAKES OF TRACTORS, SKID LOADERS, & EQUIPMENT**

**1 MILE SOUTH OF STATE RT. 39 ON C.R. 79**

## Steam Valley Farms

The Steel Family

since 1939

Farm  
Fresh  
Eggs



**Shawn Wayts**  
owner

12559 Lincoln St SE  
Paris, Ohio 44669  
330-316-3264

## Wayts Automotive LLC

[waytsautomotive@yahoo.com](mailto:waytsautomotive@yahoo.com)

## PINE RIDGE FARMS & MEATS

EST: 2020

FRESH FREEZER  
BEEF AND PORK  
FROM OUR FARM TO  
YOUR TABLE



CLINTON: 330-407-3395  
KAMERON: 330-340-1249

EMAIL:

[PINERIDGEMEATS@GMAIL.COM](mailto:PINERIDGEMEATS@GMAIL.COM)

WEBSITE:

[PINERIDGEFARMANDMEATS.FARM](http://PINERIDGEFARMANDMEATS.FARM)

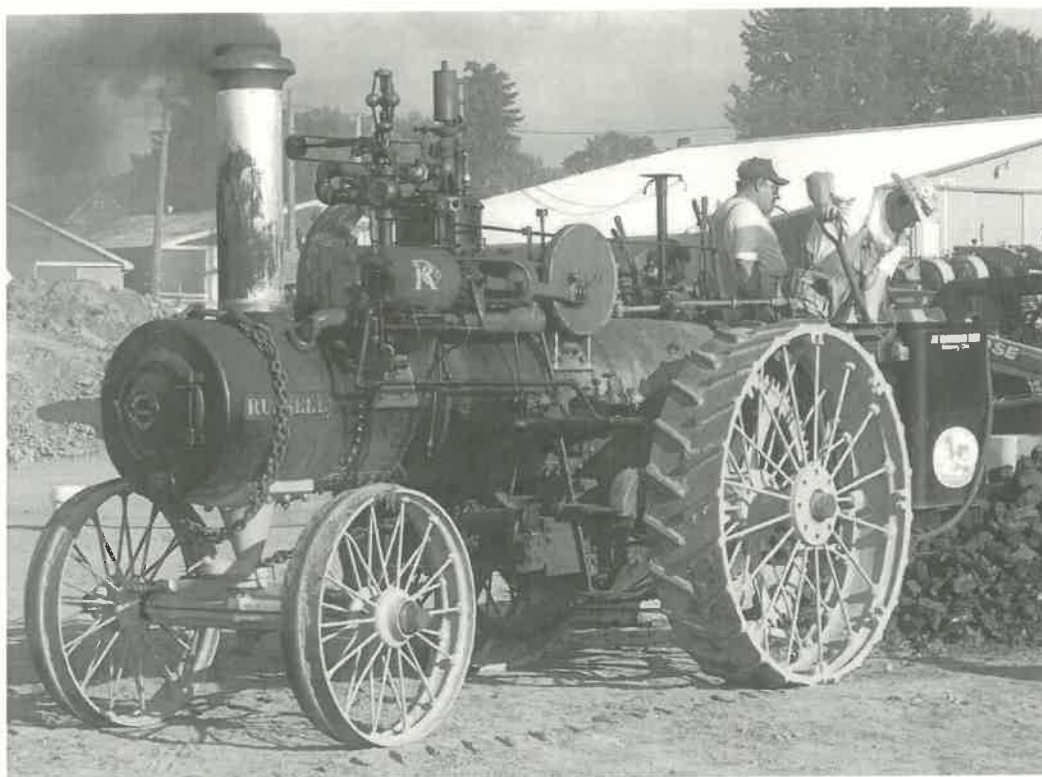
ADDRESS:

2649 STEEL RD NW  
DOVER, OHIO 44622



**Slab wood donated in  
loving memory of**

**Jeff McClenaghan**



# Buehler's

*Fresh Foods*  
An Employee Owned Company



QUALITY CASTINGS



# MARS

## Horsecare

330 E Schultz Ave. Dalton, OH 44618



Lincoln's  
Rustic  
Lemonade

Featuring  
Fresh-Squeezed Lemonade  
Real Brewed Iced Tea  
Truffles & Lemon Drop Cookies

Email us: [lincolnrusticlemonade@gmail.com](mailto:lincolnrusticlemonade@gmail.com)  
or follow us on Facebook

25% of all profits  
will be donated to  
charity



**Celebrating the Fourth  
Generation  
Of  
TVPPA Members**



**1<sup>st</sup> In Memory of Gary & Donna Lautzenheiser  
2<sup>nd</sup> Dan & Lorrie Lautzenheiser  
3<sup>rd</sup> Josh & Tessa Lautzenheiser/Alyssa & Josh Pauli  
4<sup>th</sup> Warren & Everett Lautzenheiser**



**Thank you for the  
donation of the  
bleachers for use at our  
show grounds.**



**Kiko's**  
**Greenhouse**  
**And Cement Statuary**

**Jamie &  
Tammi Kiko  
Owners**

**15579 Lincoln Way West  
Dalton, OH**

**330-832-8698**

---

**Show Schedule:**

**Friday • August 15th**

8:00 Steam Up  
9:00 Invocation by Chaplain John Steel & Flag Raising  
— Daily Activities Begin —  
11:55 Prayer & Moment of Silence  
12:00 Noon Whistle (Cover the little ones' ears)  
— Daily Activities Resume —  
1:30—Threshing of grain followed by baling of straw  
(TBA) Steam Engine Games (In front of the grandstand)  
(TBA) Tractor Rodeo (In front of the grandstand)  
4:00 Garden Tractor Pull Weigh In (Please see rules @ secretary's booth under the grandstand)  
6:00 Garden Tractor Pull

**Saturday • August 16th**

8:00 Steam Up  
9:00 Invocation by Chaplain John Steel & Flag Raising  
— Daily Activities Begin —  
11:00am Queen & Thresherman of the Year  
11:55 Prayer & Moment of Silence  
12:00 Noon Whistle (Cover the little ones' ears)  
12:00 Pedal Pull Sign Up (Kids & Adults)  
1:00 Pedal Pull  
1:30—Threshing of grain followed by baling of straw  
(TBA) Steam Engine Games  
3:00 Tractor Pull registration opens  
5:00 Antique Tractor Fun Pull  
(Put on by the TVPPA and the River Valley Pullers)  
6:00 Tractor Pull registration closes

**Sunday • August 17th**

8:00 Steam Up  
8:30 Church Service (behind the grandstand)  
(All equipment to remain idle during this time)  
Followed by Invocation & Flag Raising  
— Daily Activities Begin —  
(TBA) Tractor Rodeo (In front of the grandstand)  
11:55 Prayer & Moment of Silence  
12:00 Noon Whistle (Cover the little ones' ears)  
(TBA) Steam Engine Games  
1:30—Threshing of grain followed by baling of straw  
3:00 Grand Parade (In front of the grandstand)  
— All times are approximate and subject to change. —

---



---

## **ALL EVENTS—WEATHER PERMITTING**

### **Sawmill, Shingle Mill, Threshing, Baling**

We will demonstrate this equipment throughout the day. See how logs were cut into boards, how roofing shingles were made, and other farming techniques from our past.

### **Steam Engine Games**

Much like the tractor rodeo, these games test the operator's skill. Games like the slow and block race are crowd favorites.

### **Garden Tractor Pull**

Friday night we will have a garden tractor pull. Weigh-in starts at 4pm with the pull starting at 6pm. Complete rules will be available at the show. \$10.00 fee per hook and all pullers must be members.

### **Pedal Pull**

Saturday we will be having a pedal tractor pull at 1pm for kids of all ages in front of the grandstand.

### **Antique Tractor Fun Pull**

Saturday night we will have our traditional Antique tractor pull put on in conjunction with the River Valley Antique Pullers. Weigh-in starts at 3pm with the pulls starting at 5pm. Complete rules will be available at the show. \$10 fee per hook and all pullers must be members.

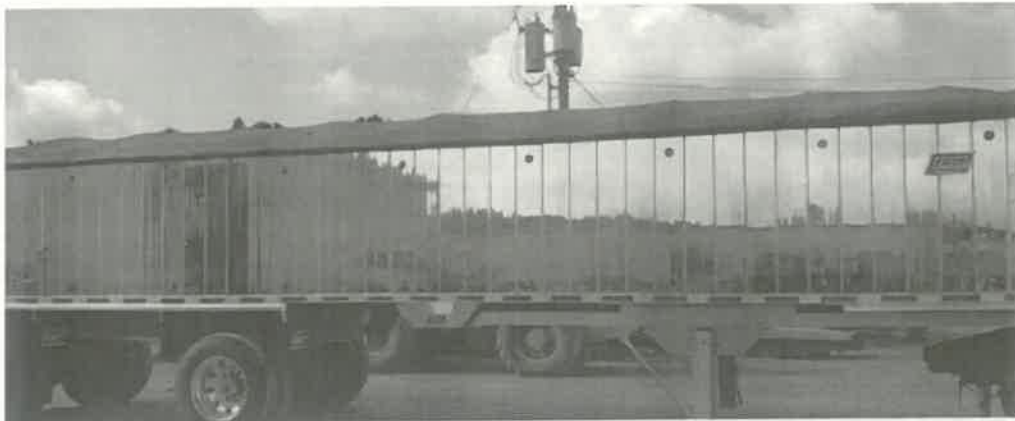
### **Church Service**

Sunday morning at 8:30 we will have a non-denominational church service behind the grandstand.

### **Grand Parade**

Sunday at 3pm we parade our exhibitors past the grandstand and share information about their equipment.

**Thank you for help with  
the driveway material  
at our show grounds.**



**T Bone Sales & Service | Baltic OH**

T Bone Sales & Service, Baltic, Ohio. 440 likes.  
dealership in dump trailer flat bed trailers grain tr...

[www.facebook.com](http://www.facebook.com)



---

**8061 Five Points Rd.  
Smithville, OH 44677**



**RESIDENTIAL • COMMERCIAL**  

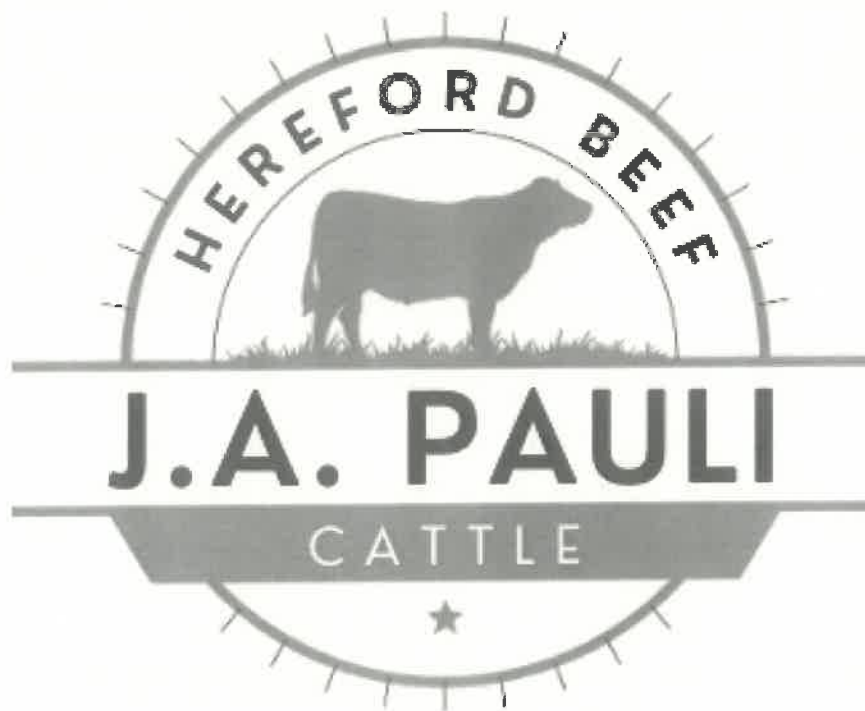
---

**INDUSTRIAL • MAINTENANCE**

State License Numbers 13027 • 28183

366 West Market Street  
Orrville, Ohio 44667  
Emergency Line: 330.682.7886

**Howard Calame**  
330.683.1788  
nrhelec@aol.com





## **Premere Enterprises, Inc.**

10882 Fort Laurens Rd. N.W.

Bolivar, OH 44612

Telephone: 330-874-3000




Fax: 330-874-4123

Email: [karry.jones@premereinc.com](mailto:karry.jones@premereinc.com)

**KARRY JONES**, Vice President

*Designers & Builders of Custom Plastic Injection Molds  
Custom Injection Molding • Custom Extrusion*






In celebration of our  
country's 250 birthday,  
we are excited to  
announce that our  
2026 feature will be

**Ohio Built.**

Any thing built in Ohio  
will be welcome at our  
show next year.

This will be part of the  
America 250-Ohio  
Commission



**Thank you for the  
driveway material  
at our show  
grounds.**

Monday-Friday 7 to 5  
Closed Holidays

*Sand, Gravel,  
Top Soil & Fill  
Mason Sand  
Concrete Sand*



**SOEHNLEN BROS.  
SAND & GRAVEL INC.**

Francis & Peggy Soehnlén, Owners

Telephone: (330) 756-2244      6888 Chestnut Ridge Road N.W.

Email: soehnlénbros@outlook.com      Beach City, Ohio 44608

**Men with "True Grit"**

# Paul's Service

## *Paul Pratt Service and Towing*

**Cars, Light to Heavy Duty Trucks, RV's, Trailers**

**Repairs, Towing, Tires, Roadside Assistance,  
Hydraulics, Commerical Mobile Mechanic**

12271 Barrs Rd SW

Massillon, OH 44647

Phone: 330-833-4245

Email: [paulprattservice@hotmail.com](mailto:paulprattservice@hotmail.com)

Shop Hours:

Monday - Friday 9 am til 5 pm

Saturday 10 am til 2 pm

Closed on Sundays



# HARRISON COAL & RECLAMATION HISTORICAL PARK



2025  
*October* **3-5**

**FRIDAY: SET UP**  
**SATURDAY: 9-4**  
**SUNDAY: 11-3**

**EARTH MOVING DEMONSTRATIONS**  
**SCALE MODEL MINING DEMONSTRATIONS +**  
**TRACTORS • STATIC DISPLAYS**  
**HIT-AND-MISS ENGINES • FLEA MARKET**  
**FOOD TRUCKS • SANDBOX FOR KIDS • AND MORE!**

**50-50 DRAWING AND RAFFLES**

**DASH PLAQUES TO  
THE FIRST 50 ENTRIES**

**ADMISSION \$5**

**EXHIBITORS GET IN FREE**

*Primitive camping available*

**CONTACT: AMY WELCH 330-401-9881**  
**43600 STUMPTOWN ROAD • CADIZ, OHIO**

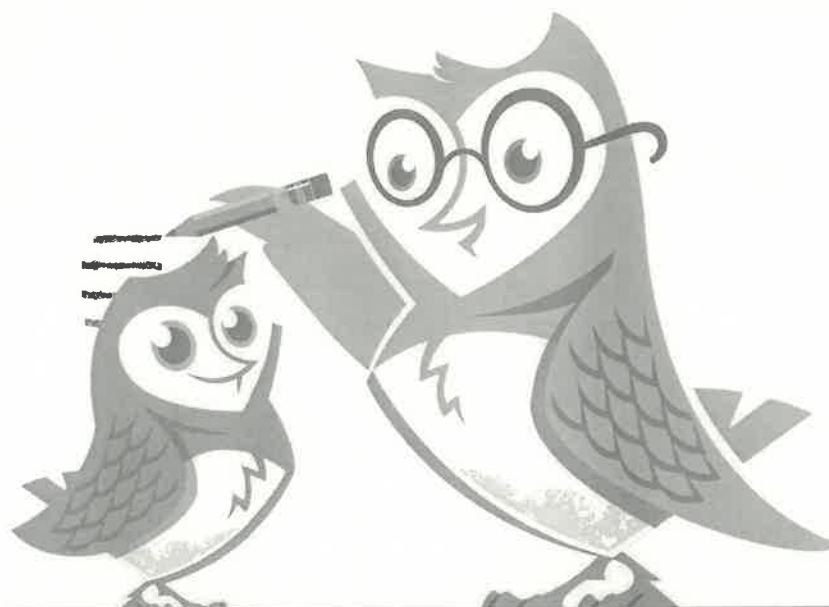


**SCAN FOR  
FACEBOOK PAGE**

# **Locally grown. Member owned.**

**Proudly serving generations  
of growers and savers  
across Tuscarawas County  
— since 1953.**

Learn more and open an  
account at [www.dpfcu.org](http://www.dpfcu.org).



[www.dpfcu.org](http://www.dpfcu.org)  
Federally Insured by NCUA  
Equal Housing Lender



Call us today. You'll be glad you did!

# Tmk Bakersville

—your crop production specialists—

Consultation • Sales • Application

[www.tmkbakersville.com](http://www.tmkbakersville.com)



Residential • Agricultural

[www.tmkvalleypropane.com](http://www.tmkvalleypropane.com)

28646 CR 97

NEWCOMERSTOWN, OH 43832

330-897-3911

Check us out on  
Facebook!



# Thank you for your raffle prize donation



**Bud's**  
**FARM TOYS**

Bud & Cheryl Garner, Owners  
**330-627-5343**  
75 W. Main St., Carrollton, OH 44615  
For more information visit: [www.budsfarmtoys.net](http://www.budsfarmtoys.net)

ERTL Toy Tractors  
& Equipment  
Bruder Trucks  
& Construction Toys  
BREYER Horses & Acces.  
Melissa & Doug Toys  
Radio Flyer Wagons  
Antique Toys & Collectibles

Hrs - M-F 9:30 to 5 & Sat. 10 to 3  
Most Credit Cards Accepted



## Oliver

**Highly Detailed G1355 Tractor**  
**SpecCast Classis Series**



5219 Deis Hill Rd NW  
Dover, Ohio 44662  
330-343-5708

[owensimplement.com](http://owensimplement.com)

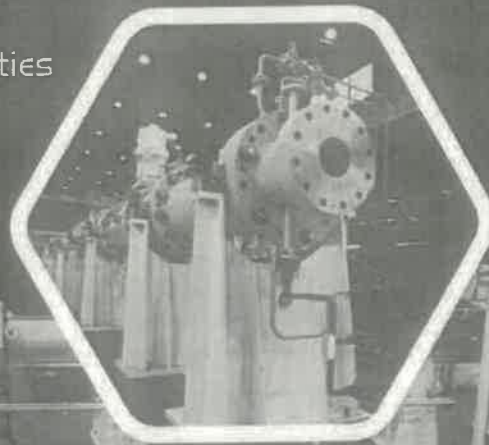


# MACHINISTS WANTED

## TOP WAGES

### CNC - Lathes - Mills

Proudly serving the  
rubber and plastics industries  
for 40 years.



577 Oberlin Road SW  
Massillon, OH

330-837-3868

[www.NFM.net](http://www.NFM.net)

---

*In Loving Memory*



*Of Those We Lost  
Since Our Last Show*

**SHIRLEY FOX**

**JEFF McCLENGAHAN**

---

### Hart-Parr

The Hart-Parr Company was originally formed as the Hart-Parr Engine Works in Madison, Wisconsin, by Charles Hart and Charles Parr. In 1900, the decision was made to relocate to Charles City, Iowa. Over the winter of 1901-1902, they produced their first gas traction engine. Hart and Parr were credited for being the first successful mass production gas traction engine company. They are also credited with introducing the word "tractor" to the English language.

By 1907, the Hart-Parr Company was well established in the tractor manufacturing business and had six major branch houses, as well as an ever-growing factory in Charles City. World War I was not a profitable time for Hart-Parr, as they lost considerable money retooling for the manufacture of munitions.

Existing problems caused Charles Hart to leave the company in 1917. Charles Parr remained with the company until his death in 1941. The Hart-Parr Company merged with the Oliver Chilled Plow Works in 1929 to form the Oliver Farm Equipment Company.

### Oliver Chilled Plow Works

In 1855, James Oliver of Mishawaka, Indiana, bought a quarter interest in a small foundry outside of South Bend. In 1857, he received his first patent for his chilled plow. This chilled plow had a very hard outer skin and was able to scour in heavy, sticky soils with greater wearability. Word of its success spread world-wide, resulting in an enormous amount of plows being manufactured and sold. Oliver soon became known as the "Plowmakers for the World."

In the 1920s, Oliver began experimenting with a tractor of its own. The result was the "Oliver Chilled Plow Tractor." Only one example of this tractor is known to exist today. Shortly after their tractor venture, Oliver merged with Hart-Parr, a company already set up in the tractor business. A new line of tractors was produced using ideas from the Chilled Plow tractor and Hart-Parr's

---

### Oliver Farm Equipment Company

This Company was formed in 1929 after the merger of Hart-Parr Tractor Works, Nichols & Shepard, Oliver Chilled Plow Works, and the American Seeding Company. Corporate offices were set up in Chicago, Illinois, while the plants remained at their existing locations. The company could now supply the farmer with a tractor, tillage tools, planting tools, and harvesting machines. The Oliver Farm Equipment Company became the Oliver Corporation in 1944.

### Cletrac

Cletrac of Cleveland, Ohio, continued to produce a full line of crawlers with world-wide exports. Their horsepower range varied from nine horsepower up to their hefty 100-horsepower model. In 1944, Cletrac was acquired by the Oliver Corporation. Crawler production continued until 1962 when White Motor Corporation purchased Oliver. At that time, crawler production was relocated to Charles City, Iowa, where it remained until production was discontinued in 1965. Between 1916 and 1944, there were approximately 75 different crawler models.

### White Motor Corporation

In 1960, White Motors acquired the Oliver Corporation as a wholly-owned subsidiary. In 1962, they acquired Cockshutt of Canada, and soon after in 1963, they acquired Minneapolis-Moline.

In 1969, White Motor Corporation combined its Oliver and Minneapolis-Moline subsidiaries to become the White Farm Equipment Company with headquarters at Oak Brook, Illinois. White Motor acted as the parent company of the White Farm Equipment Company and continued to exist until the farm equipment division was sold to TIC in 1980. The truck division was sold to Volvo in 1981. The last Oliver green tractor to roll off the assembly line bearing the Oliver name was in 1976 with the 2255 designation.

Information copied from







# TVPPA

## Annual Banquet

Nov. 8th 2025

Union Hill Church

Sugarcreek, OH

Meeting @ 5:30pm

Dinner @ 6:30pm

Adults \$16.00 # \_\_\_\_\_

Kids 5-12 \$8.00 # \_\_\_\_\_

Kids 0-4 Free # \_\_\_\_\_

Send reservations

2383 Oldtown Valley Rd SW

New Phila., OH 44663

Make checks to TVPPA



Fill out and return to the address above.

---

## *2025 Advertisers*

Bud's Farm Toys .....	31	NRH Electric, Inc .....	22
Buehlers .....	15	Pauli Welding Service.....	23
Crane & Rigging .....	12	Paul's Service .....	27
D Weaver Trucking .....	4	Permere Enterprises, Inc.....	24
DE Earthworks.....	10	Pine Ridge Farms & Meats .....	13
Dover Phila Federal Credit Union ....	29	Praire Farms .....	15
Fisher Farm Service .....	13	Quality Castings.....	15
Grove Racing.....	7	Shoup Brothers Farm.....	21
H.C.R.H.P.....	28	Soehnlén Bros Sand & Gravel.....	26
J.A. Pauli Cattle .....	23	Starrett Service .....	9
Kikos Greenhouse .....	17	Steam Valley Farms .....	13
Lautzenheiser Family .....	16	T Bone Sales & Service .....	20
Lincoln's Rustic Lemonade .....	15	TMK Bakerville.....	30
Marlboro Supply .....	6	Wayts Automotive, LLC .....	13
Mars Horsecare .....	15	Zimmerman Steel .....	8
Millersburg Tire Service, Inc.....	5		

## *Thank You!*

---

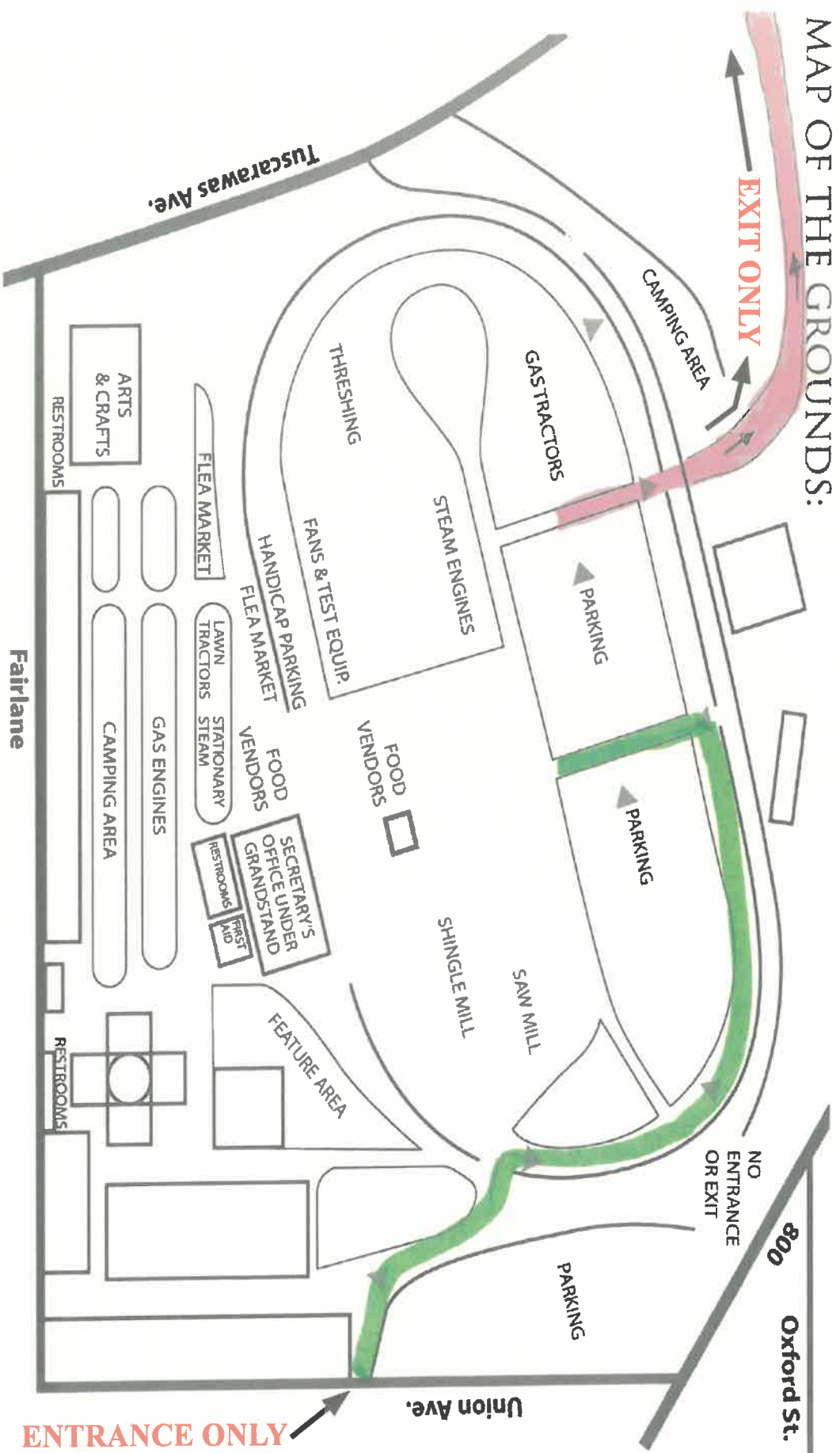
Please feel free to come to our meetings to find out how you can help plan our show at Dover or the event at our land in Navarre. All meetings are held at the Wandle House, 45 S. Wabash Ave, Brewster, Ohio 44613, on the following dates at 1:30pm unless otherwise advised.

### **Meeting dates**

October 5, 2025	May 3, 2026
November 2, 2025	May 30, 2026 - one day show at Navarre
December -- TBD	June 7, 2026
January 4, 2026	July -- TBD
February 1, 2026 - planning for Navarre Show	August 2, 2026
March 1, 2026	Set up Sunday, August 16, 2026
April 12, 2026	Show - August 21, 22 & 23, 2026

All meetings are held at the Wandle House in Brewster  
at 1:30pm unless otherwise noted.

# MAP OF THE GROUNDS:



All traffic enters the fairgrounds from the East side at Union Ave. All traffic exits to the West at Tuscarawas Ave. Equipment trailers must be parked across Tusc. Ave, or in the additional lot off of Oxford St. and 800.